



HOSIER LANE, LONDON, EC1A 9LS

Asking Price £525,000

1 Bedrooms | 1 Bathrooms | For Sale

Property Features

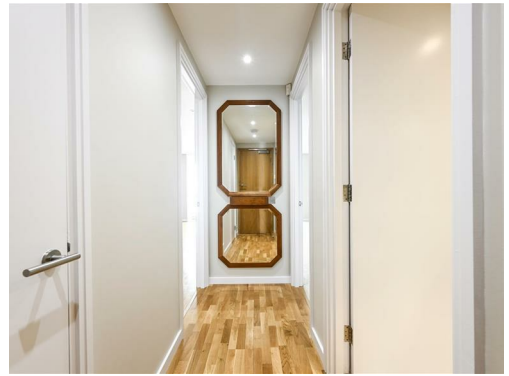
- Large One Bedroom Apartment
- Modern Bathroom
- 24/7 Concierge
- Close to Farringdon Elizabeth Line Station
- Fully Fitted Kitchen
- 647 sq ft
- No Onward Chain
- Close to St Pauls Tube Station

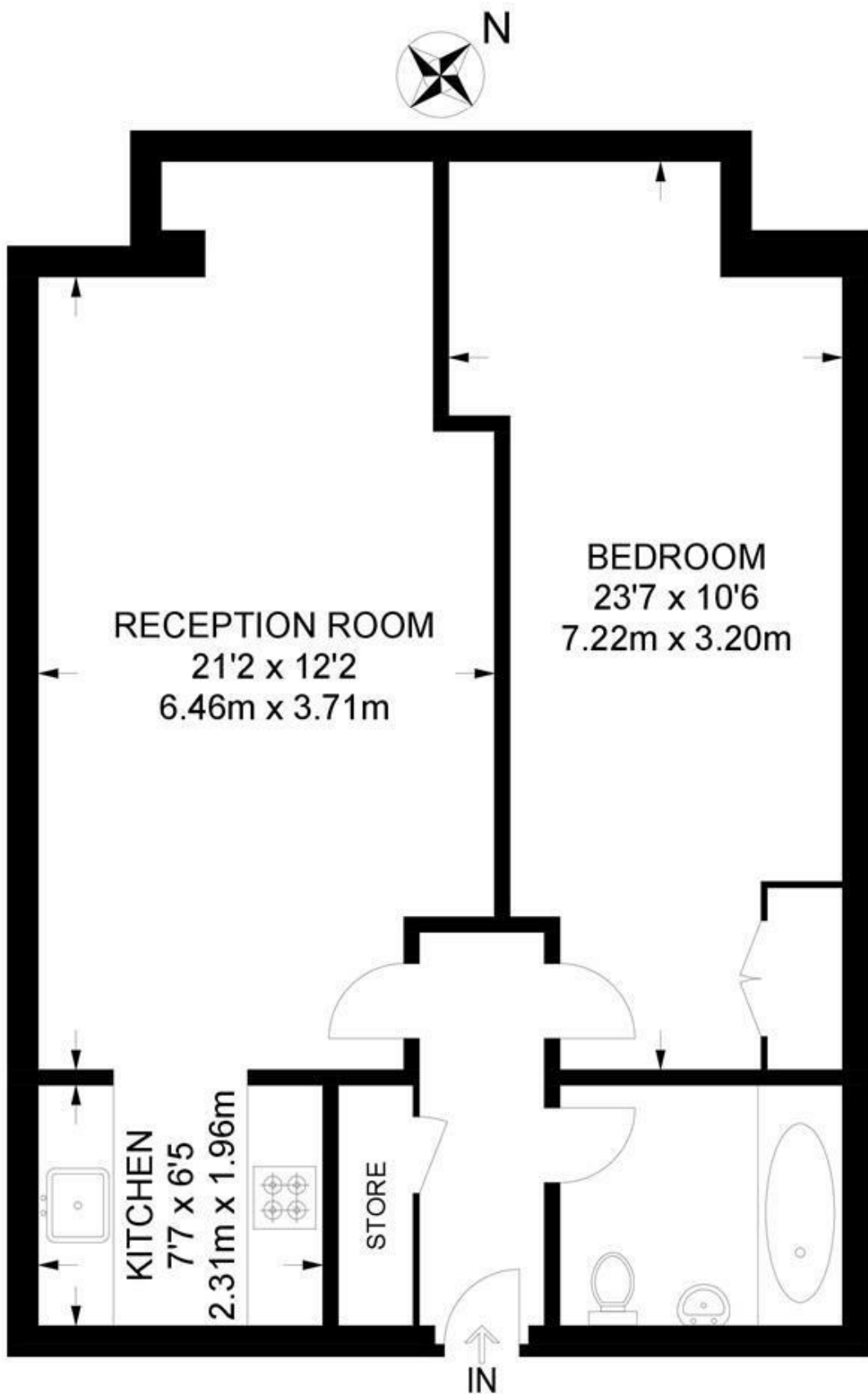
Situated on the Fourth Floor of the popular development 10 Hosier Lane, is this large ONE BEDROOM apartment measuring approx. 640 sq. ft. This apartment offers high quality features, including a fully fitted kitchen, sealed wood flooring, and a modern tiled bathroom. This property is presented in excellent condition throughout and offered with no ongoing chain.

This development offers 24 hour portorage with an impressive main entrance that has been recently refurbished. 10 Hosier Lane is situated just off West Smithfield, close to St Pauls and Farringdon in a very convenient City Location.

Situated close to BARBICAN (Circle Line), St PAUL'S (Central Line) and the new ELIZABETH LINE Station, Farringdon. Within walking distance are Waitrose, Marks & Spencer and Tesco. Also within easy reach are St. Pauls' Cathedral, The River, South Bank, Tate Modern, and the One New Change Shopping Complex with various shops, restaurants and bars.

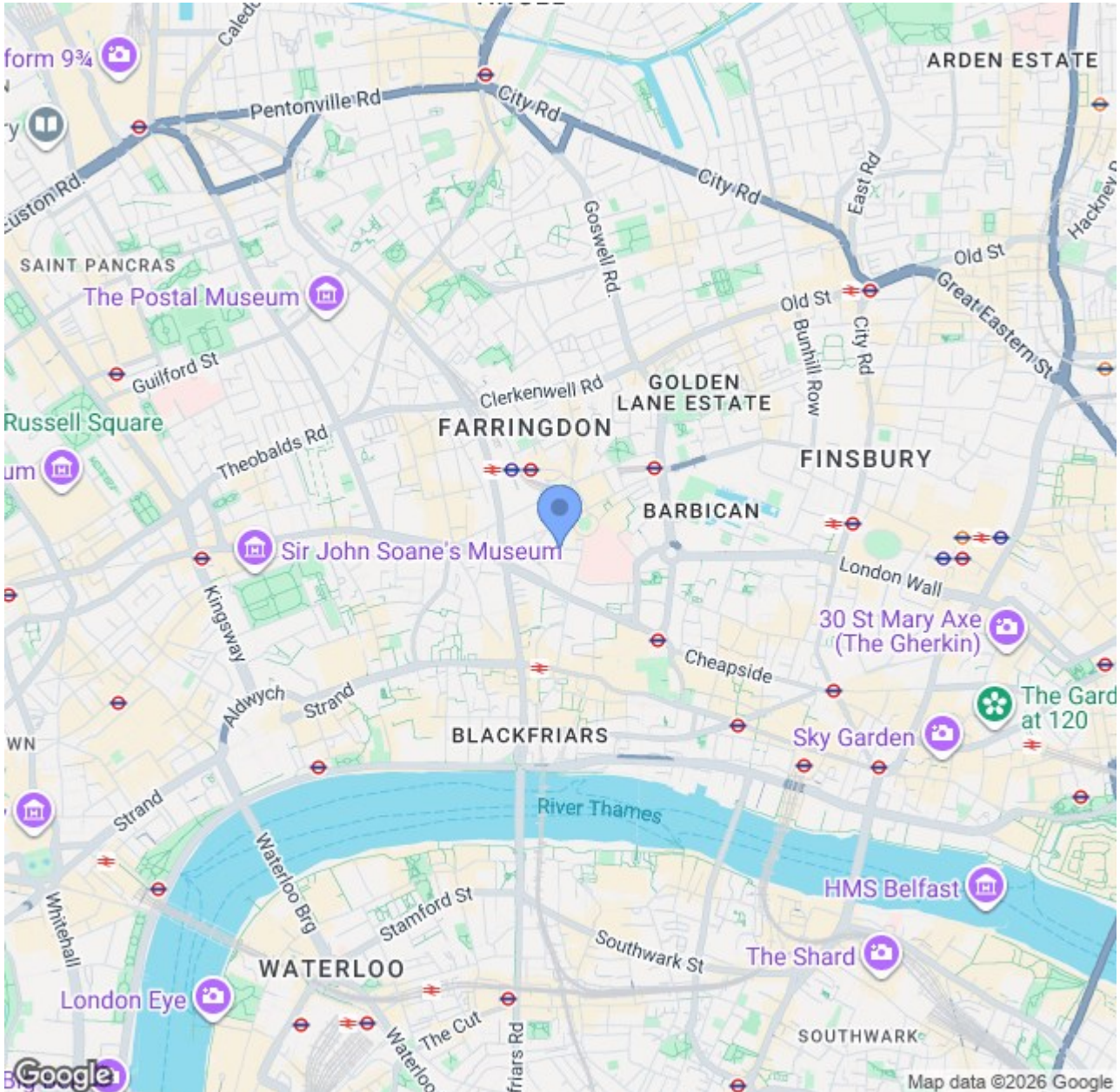
Lease: 999 years from 2002 Service Charge: £6180.00 per annum Ground Rent: £250 per annum
Council Tax Band: E £1,625.02 per annum





FOURTH FLOOR

**APPROXIMATE GROSS INTERNAL AREA
647 SQ FT / 60.1 SQ M**



CONTACT US ABOUT THIS PROPERTY

122 Newgate Street, London, EC1A 7AA

T: 020 7600 0026

F: 020 7600 0025

E: property@scottcity.co.uk



Energy Efficiency Rating		Current	Potential
Very energy efficient - lower running costs			
(92 plus) A			
(81-91) B			
(69-80) C		75	84
(55-68) D			
(39-54) E			
(21-38) F			
(1-20) G			
Not energy efficient - higher running costs			
England & Wales		EU Directive 2002/91/EC	